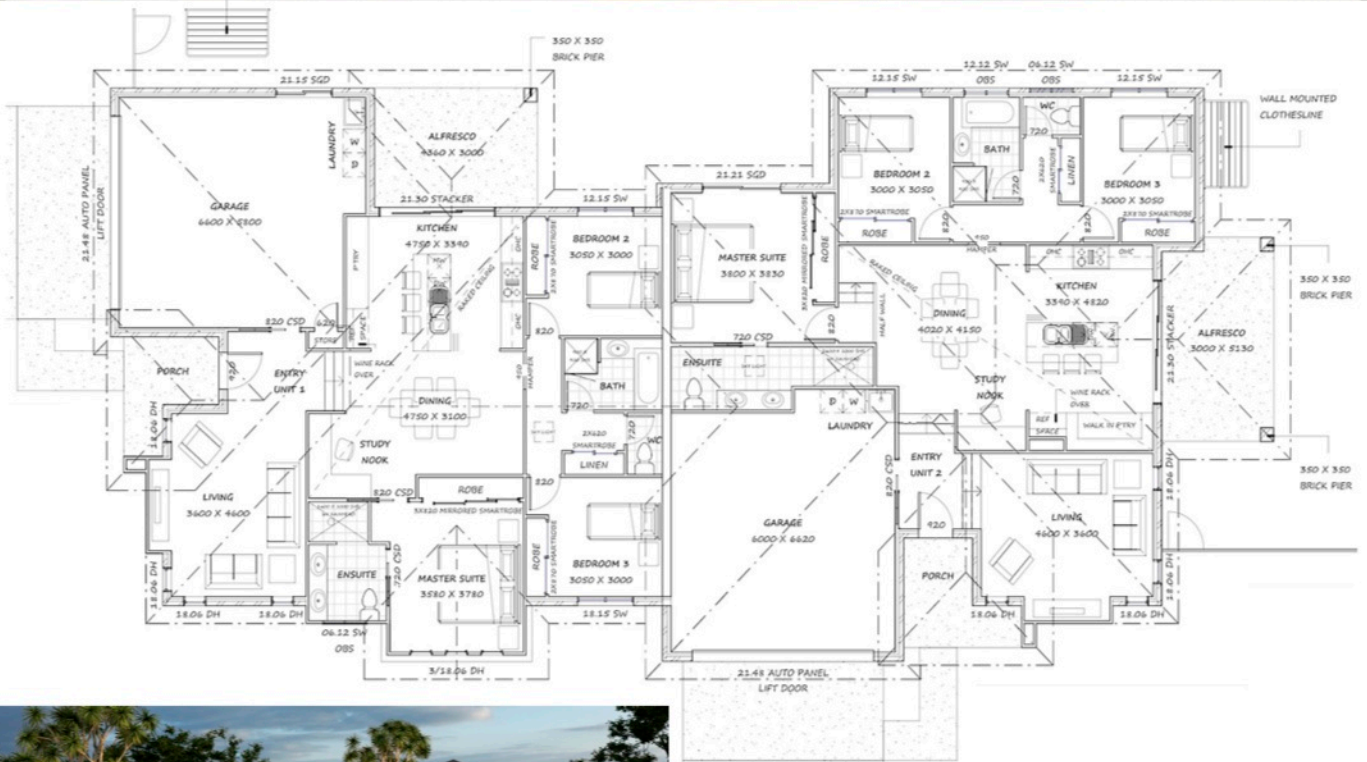


The BAROSSA DUPLEX



UNIT ONE: 184.8 Sq/m
UNIT TWO: 195.2 Sq/m

Total size: 380 sq/m

Lot Requirements
Corner lot
WIDTH: 22.0
LENGTH: 40.0

Duplex approvals will need to be obtained from the local authorities.

The Barossa has been designed to suit a sloping corner allotment with maximum street appeal, and offers to each unit:

- 3 Bedrooms
- 2 Bathrooms
- Gourmet Kitchen with 900 wide appliances
- Separate Living and Dining areas
- Study nook with built in desk
- Raked ceiling through the Dining/Kitchen area
- Formal entry
- Double lock up garage
- Covered alfresco area under the main roof
- Use of different external materials to achieve maximum street appeal